

# FIELD CONDITION

March 9, 2018

## **Construction Update: 150 Wooster**



*Looking south from Houston Street.*

Construction has wrapped up at 150 Wooster, an 8-story residential building developed and designed by KUB Capital. The building replaces a 1-story retail structure and parking lot and required approval from the Landmarks Preservation Commission due to its location in the historic SoHo neighborhood.



*Close-up of the parapet at the northwest corner.*

The Wooster Street facade features a pallet of materials inspired by the neighborhood. Indiana limestone framed punch windows are set in a field of handmade Petersen bricks from Denmark. The storefront and residential entry base, as well as the cornice, feature cast iron details.

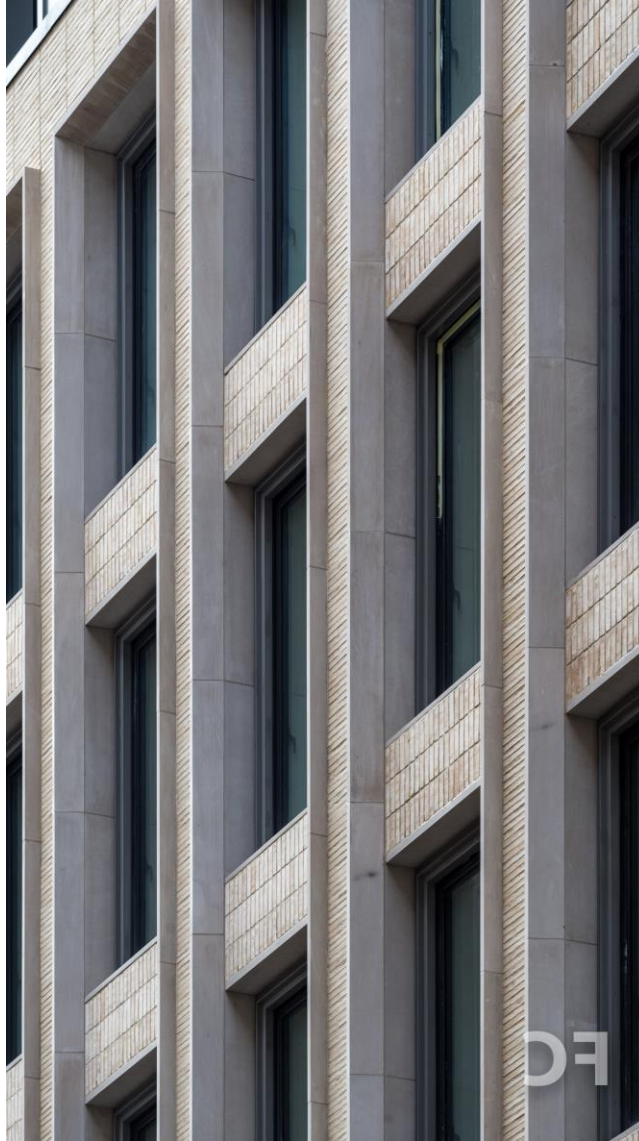


*Close-up of the top floor.*



*Close-up of the parapet at the northwest corner.*





*Close-up of the west facade.*

The building offers five full floor residences and a duplex penthouse at the top two floors. Two retail spaces at 5,000 square feet each are located at the ground floor.



*Looking up at the west facade.*



*Entry canopy.*





*Looking up at the west facade.*



*Close-up of the west facade.*







*Residential entry and retail at the ground floor.*

**Design Architect/Developer:** KUB Capital; **Architect of Record:** HTO Architect; **Landscape Architect:** Future Green; **Program:** Residential, Retail; **Location:** SoHo, New York, NY; **Completion:** 2017.