



January 8, 2019

The Fitzroy And Its Art Deco-Inspired Exterior Near Full Completion At 514 West 24th Street, In Chelsea



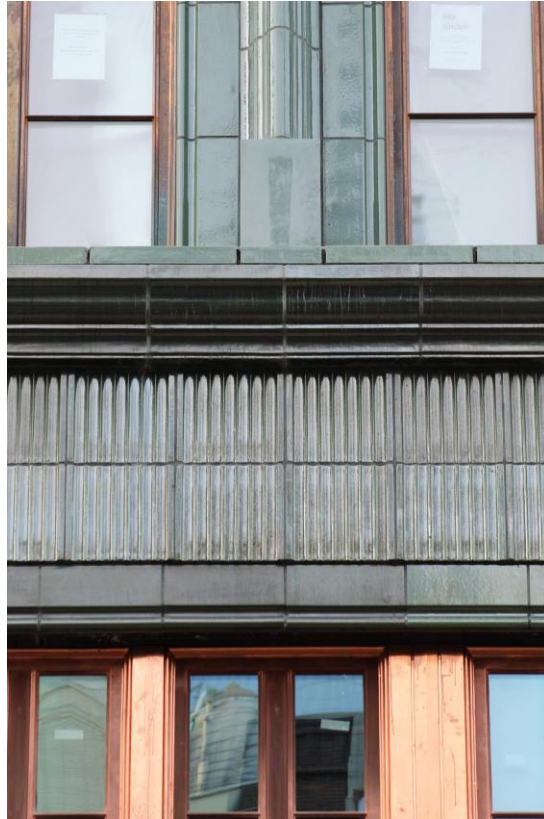
The northern elevation of The Fitzroy at 514 West 24th Street. Photo by Michael Young

A handsome Art Deco-inspired exterior adorns the The Fitzroy, located at 514 West 24th Street, which is now practically complete. The insides are also nearing the finish line, and will soon open to prospective residents. The project is being designed by Roman and Williams, and developed by a partnership between JDS Development and Largo Investments.



The northern elevation of The Fitzroy at 514 West 24th Street. Photo by Michael Young

The scaffolding is nearly disassembled, except for the ground floor, where signage displays the name of the building in Art Deco font. The detailing in the facade is superb, and something to admire in different lighting and times of the day. Spotlights for the exterior face upwards, and have already been installed. They're being designed by L'Observatoire International.



A close-up of the terracotta panels and texture of the facade. Photo by Michael Young

The spotlights will truly make the building and its mixture of terracotta panels and copper-framed windows stand out at night. The number of grooves, curves and layers of texture will create a beautiful play of shadows and depth once illuminated. The landscape on the upper setbacks and outdoor gardens are designed by Evan C. Lai Landscape Designs.

The building is composed of nearly 65,300 square feet, and sits close to the High Line, but far enough from the prying eyes of tourists for privacy to be relatively ensured. Standing 120 feet and ten stories to its rooftop, there are 14 half and full-floor residences within. The ninth floor penthouse spans 4,328 square feet, and includes four bedrooms, a great room with two private outdoor terraces, a library, and a media room.



The Fitzroy. Official rendering, via JDS Development

The residences start at \$5.6 million and are being marketed by CORE. Amenities include a 24-hour attended lobby, a fitness center designed by La Palestra, a wine cellar with designated cabinets for each resident, a landscaped rooftop with a kitchen, an art studio for children, bike storage, and a climate-controlled storage room.

The Fitzroy will be completed this year.